

Lucid Mobile Charging Cable (NA) User Manual

Legal

Lucid, the Lucid (stylized) logo, and other names and logos that appear in this manual are trademarks of Lucid Group, Inc., its subsidiaries, or licensors.

No portion of these materials may be duplicated, used or disclosed without prior written permission from Lucid Group, Inc.

Specifications are subject to change without notice. Images of the Lucid Mobile Charging Cable are representative; production models may vary.

Disclaimer

This user guide includes the latest information available at the time of publishing. Lucid USA, Inc. reserves the right to make changes to this user guide and/or product without notice. Changes or modifications to this product not completed by an authorized service provider could void the product warranty.

Contact

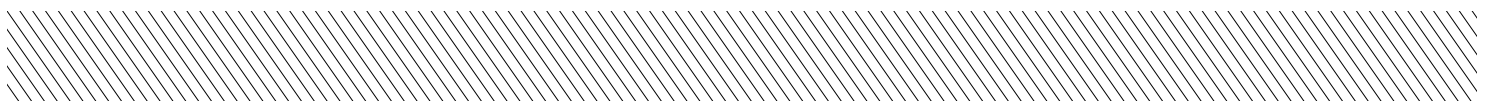
Corporate Headquarters
Lucid USA, Inc
7373 Gateway Blvd.
Newark, CA 94560

+1 (888) 995-8243
customer@lucidmotors.com
www.lucidmotors.com



Contents

Section	Contents
Safety Information	Warnings/Cautions 3
Overview	Mobile Charger Component Overview 4
	Specifications 5
Adaptors	Adaptors and Charging Rates 6
	Attaching and Removing the Adaptor 7
Charging	Charge times 8
	Plugging in the Connector 9
	Removing the Connector 9
	Status Lights 10
Installation	Wall Mount Installation 11
	Cable Hook Installation 12
Troubleshooting	Warranty Information 13
	Technical Support 13



Important Safety Information

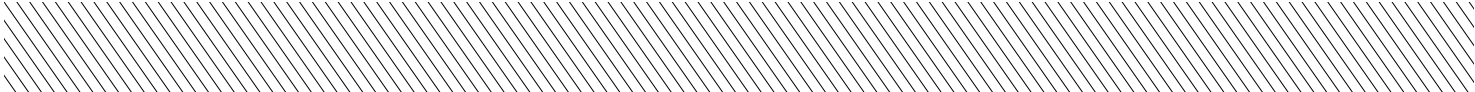
Warning

- Read owner's manual before operating
 - Do not use if damaged
 - Do not use with an extension cord
 - For use with electric vehicles
 - Ventilation not required
 - Connect only to properly grounded outlets
 - Not serviceable
 - Do not open
 - Automatic reset provided
-

Attention

- Lire le manuel avant utilisation
 - Ne pas utiliser si endommagé
 - Ne pas utiliser de prolongateur
 - Pour utilisation avec des véhicules électriques
 - Aucune ventilation requise
 - N'utiliser qu'avec des prises munies de mise à la terre
 - Non réparable
 - Ne pas démonter
 - Remise à zéro automatique
-

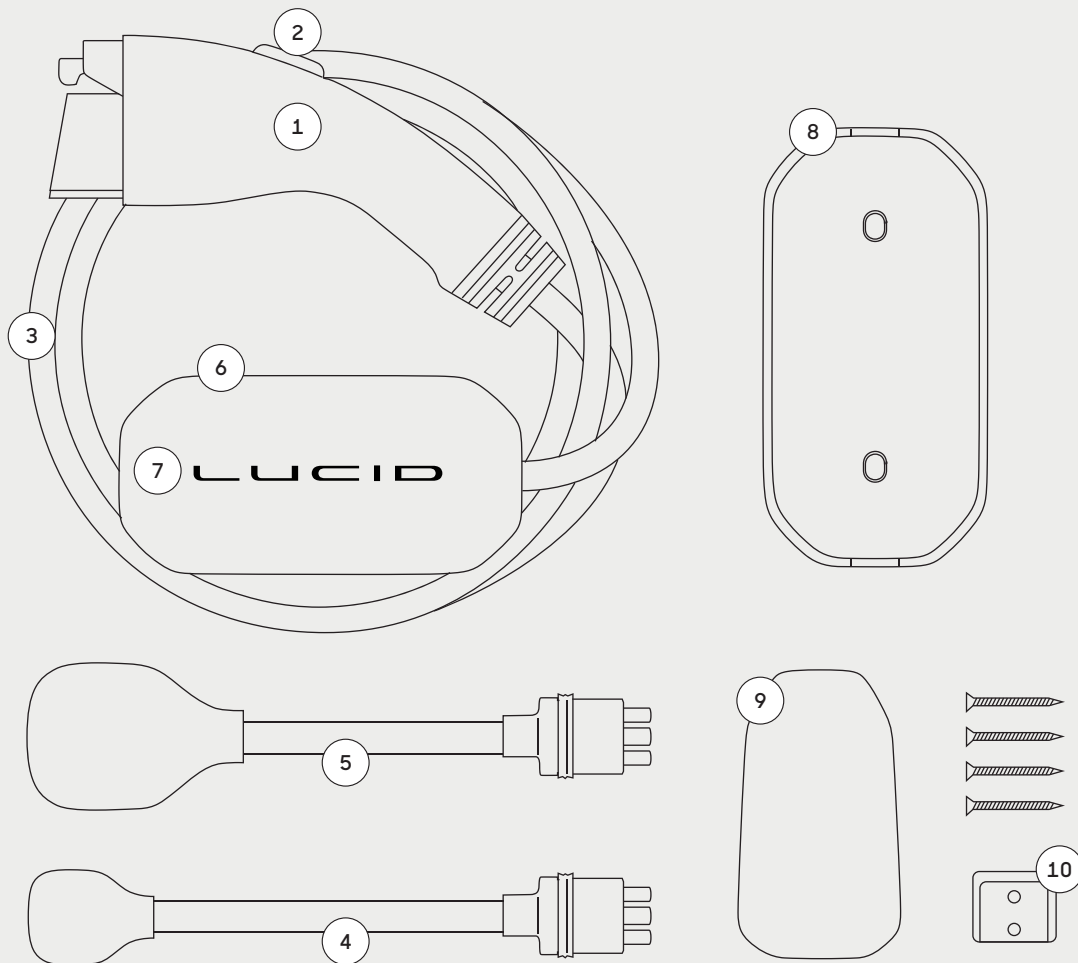
This equipment has been tested and found to comply with the limits for a Class B digital device, pursuant to part 15 of the FCC Rules. These limits are designed to provide reasonable protection against harmful interference in a residential installation. This equipment generates, uses and can radiate radio frequency energy and, if not installed and used in accordance with the instructions, may cause harmful interference to radio communications. However, there is no guarantee that interference will not occur in a particular installation. If this equipment does cause harmful interference to radio or television reception, which can be determined by turning the equipment off and on, the user is encouraged to try to correct the interference by one or more of the following measures:

- Reorient or relocate the receiving antenna.
 - Increase the separation between the equipment and receiver.
 - Connect the equipment into an outlet on a circuit different from that to which the receiver is connected.
 - Consult the dealer or an experienced radio/TV technician for help.
-
- 

Lucid Mobile Charging Cable Overview

Package Contents

1. Charging Connector (plugs into vehicle)
2. Connector Latch Button
3. Connector Cable (fixed to control unit)
4. NEMA 5-15 Adaptor (removable, plugs into wall outlet)
5. NEMA 14-50 Adaptor (if equipped)
6. Mobile Charger Control Unit
7. Status LED Lights
8. Wall Mount Bracket
9. Cable Hook
10. Mounting Hardware



Specifications

Overview

Use only a 120-volt, 208-volt or 240-volt AC supply, 50/60 hertz wall outlet that has a dedicated and properly grounded circuit, and is rated for at least 15 amps.

If possible, use a dedicated outlet with a single socket. If the outlet has two sockets, do not plug any other items into the other socket.

The Mobile Charging Cable is 20 feet (6 meters) long. Use an existing outlet or install a new outlet within approximately 13 feet (4 meters) of the vehicle's charge port and at least 18 inches (45 cm) above the ground. The charge port door is located to the rear of the driver side front wheel.

Specifications Reference

Voltage

100–240V AC single-phase

Grid Frequency

50 Hz / 60 Hz

Weight

8.2 lbs / 3.7 Kg

Operating Temperature

–30° C to +50° C

Maximum Current

40Amps max, controlled by adaptor

Mobile Charging Cable Control Box Dimensions

Height **7.1 in / 180 mm**

Width **3.5 in / 90 mm**

Depth **2.0 in / 50 mm**

Enclosure Rating

4X (Waterproof)

Ventilation

Not Required



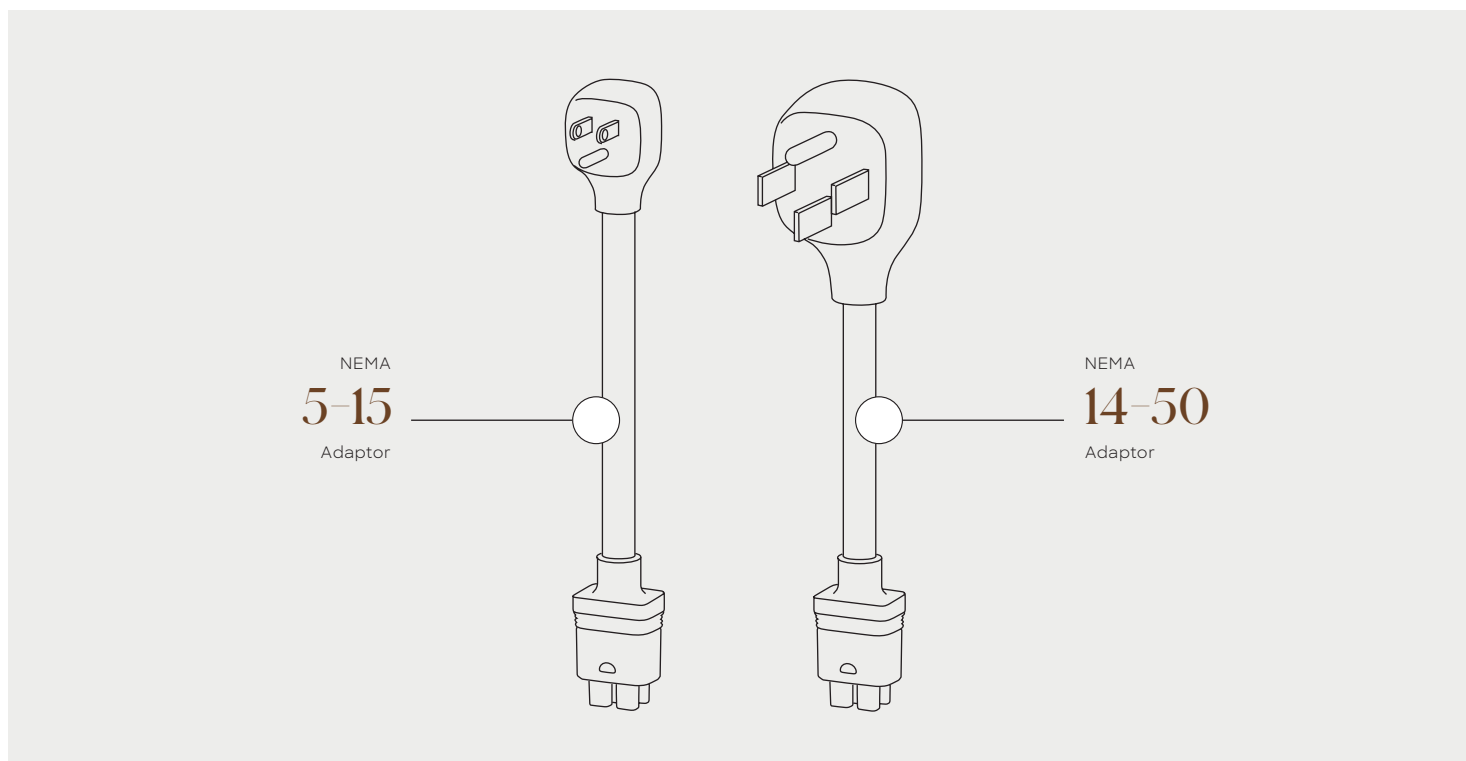
Adaptors

Exhibit A

Note

The Lucid Mobile Charger includes two outlet adaptors: one for a standard 120-volt household outlet and a second adaptor for a 240-volt outlet. Additional adaptors may be available for purchase from Lucid. For faster charging, use a 240-volt outlet.

Lucid has partnered with Qmerit to provide Lucid owners with consistent, reliable, and certified electrical outlet and Mobile Charger installation services. To locate the nearest Lucid-approved Qmerit installers, contact Lucid Customer Care at +1 (888) 995-8243 or customer care@lucidmotors.com.



Reference Table

Adaptor Type	Current	Power at 120 Volts
5-15	12 A	1.3 kW
Adaptor Type	Current	Power at 240 Volts
14-50	40 A	9.6 kW
14-30	24 A	5.7 kW

Charging Time

Description

Charging times vary based on the voltage and current available from the power outlet, subject to various conditions. Charge time also depends on ambient temperature and the vehicle's battery temperature. If the battery is not within the optimal temperature range for charging, the vehicle heats or cools the battery before or during charging.

To estimate the time needed to recharge the battery in hours (from near zero percent to near one hundred percent), divide the battery size (kWh) by power (kW). Different adaptors provide different current and power outputs.

While you are charging your vehicle, you can also touch the charging icon on your infotainment screen or the Lucid App to review the charging status information- including the time remaining until fully charged at the currently selected charge level.

For more information on how long it takes to charge your Lucid vehicle, go to www.lucidmotors.com/charging.

Note

An electricity relationship principle known as Ohm's Law states that a 240-volt circuit charging at 40 amps provides 9600 watts of power: $40 \times 240 = 9600$. When expressed as kilowatts, this works out to 9.6 kW.

Thus, it would take between 9-10 hours to charge a 90 kWh battery pack from 0% capacity to 100% capacity. (90 divided by 9.6 is roughly 9.3 hours.) Further note that, in order to avoid possible battery damage, Lucid recommends that you never fully discharge the vehicle battery.



Connecting the Adaptor

Attaching

To attach an adaptor, line up the adaptor plug with the control box of the Mobile Charging Cable and push it into the socket until it snaps into place.

Removing

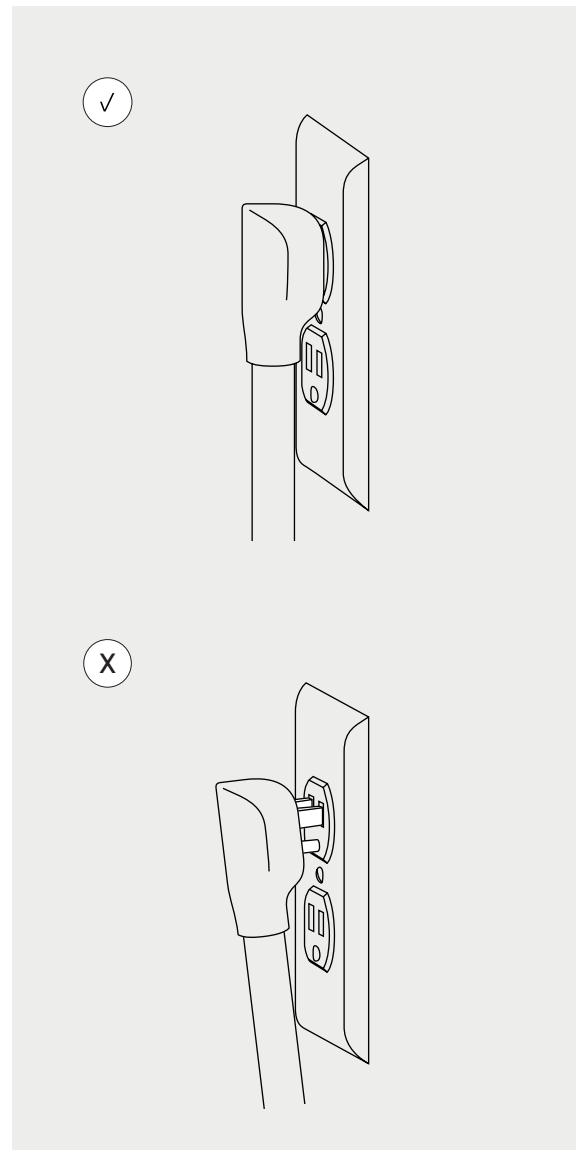
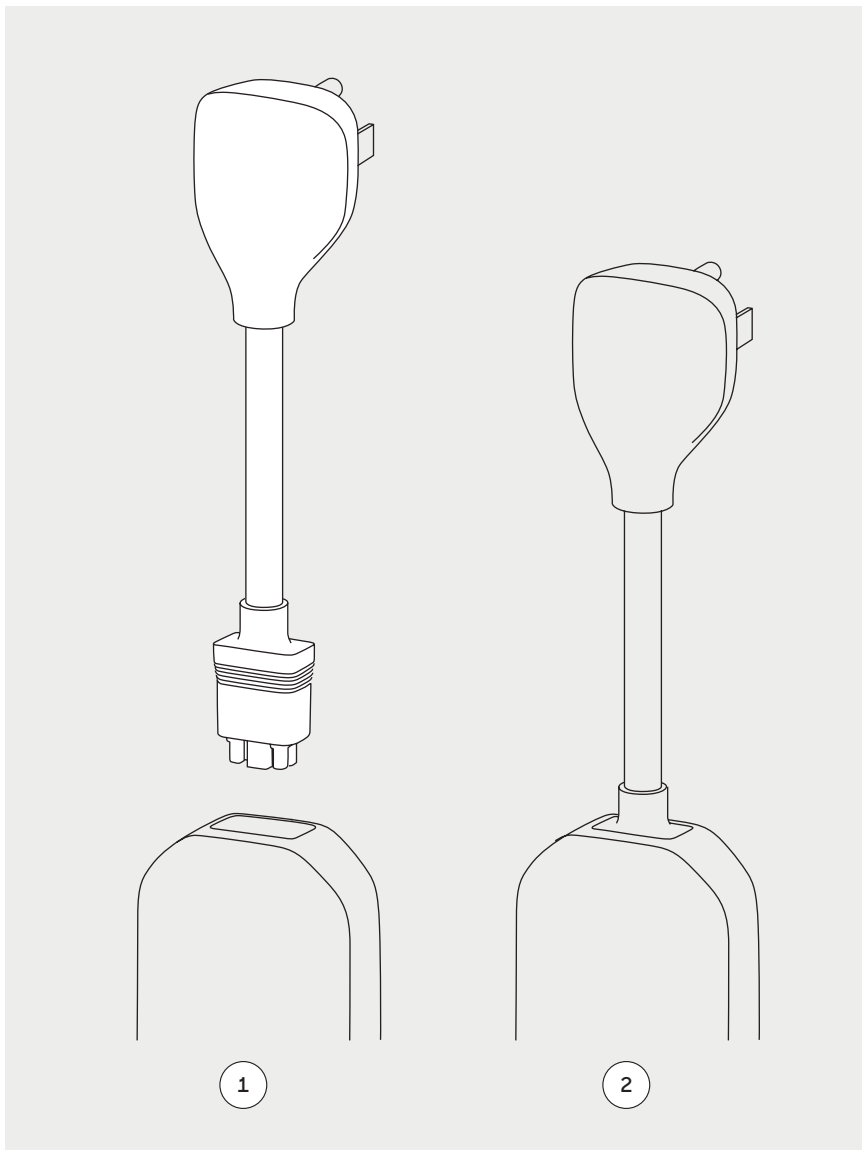
To remove the adaptor, firmly grasp the adaptor and pull it from its socket.

Plugging In

To plug the unit in, line up the adaptor plug with electrical outlet on the wall and push it into the outlet until it snaps into place and is fully inserted.

Note

The Mobile Charging Cable automatically detects the attached adaptor and sets the appropriate charging amperage.



Charging your Vehicle

Plugging in

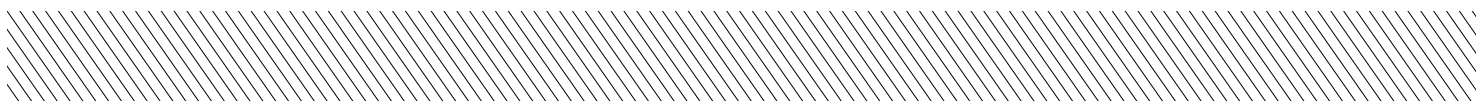
Follow these steps to ensure proper charging of your Lucid vehicle.

1. Ensure that the adaptor plugged into the Mobile Charging Cable matches the outlet you want to use.
2. Plug the Mobile Charging Cable plug head into the power outlet. The adaptor should be inserted completely into the power outlet. The Lucid logo on the control box should light up with a white light to indicate the unit is powered and ready.
3. With your vehicle unlocked, open the charge port door.
4. Press the Connector latch button, and plug the Mobile Charging Cable Connector into your vehicle's charge port.
5. When you plug the Mobile Charging Cable into your vehicle, the Lucid logo on the control box and the charge port light will pulse green to indicate charging.

Unplugging

When charging is complete, the light stops pulsing and turns solid green. You can then safely unplug the vehicle using these steps.

1. With the vehicle unlocked, press the Connector Latch Button and then pull the Connector out of the charge port.
2. Lucid recommends leaving the Mobile Charging Cable plugged into the wall outlet to reduce wear and tear from daily use. If you do not plan to use the Mobile Charging Cable for extended periods of time (e.g, vacation), unplug it, and store it in an appropriate location.



Mobile Charger Status Lights

The Mobile Charging Cable Control Box includes lights that indicate device status. Refer to the following table to understand device status.

Light Color	Light Animation	What it Means	What to do
No Light		Power Off	Check power supply
White	Constant	Ready to Charge / Communicating	
White	Constant	Charging in Progress	
Red	One flash	GFCI Fault	Unplug and then plug the Charging Cable into power outlet. Try a different outlet.
Red	Two flashes	Relay Error	Unplug and then plug the Charging Cable into a power outlet.
Red	Three flashes	Loss of Ground	Check if correct plug is used and if plugs are fully inserted. Try a different outlet.
Red	Four flashes	Overtemperature detected in NEMA Plug	Check if plugs are fully inserted. Try charging in a cooler area.
Red	Five flashes	Overtemperature detected in EVSE Relay	Check if plugs are fully inserted. Try charging in a cooler area.
Red	Six flashes	Pilot Signal Error	Unplug and then plug the Charging Cable into a power outlet.
Red	Seven flashes	Undervoltage Error	Unplug and then plug the Charging Cable into a power outlet. Try a different outlet.
Red	Eight flashes	Overvoltage Error	Unplug and then plug the Charging Cable into a power outlet. Try a different outlet.

Wall Mount Installation

Instructions

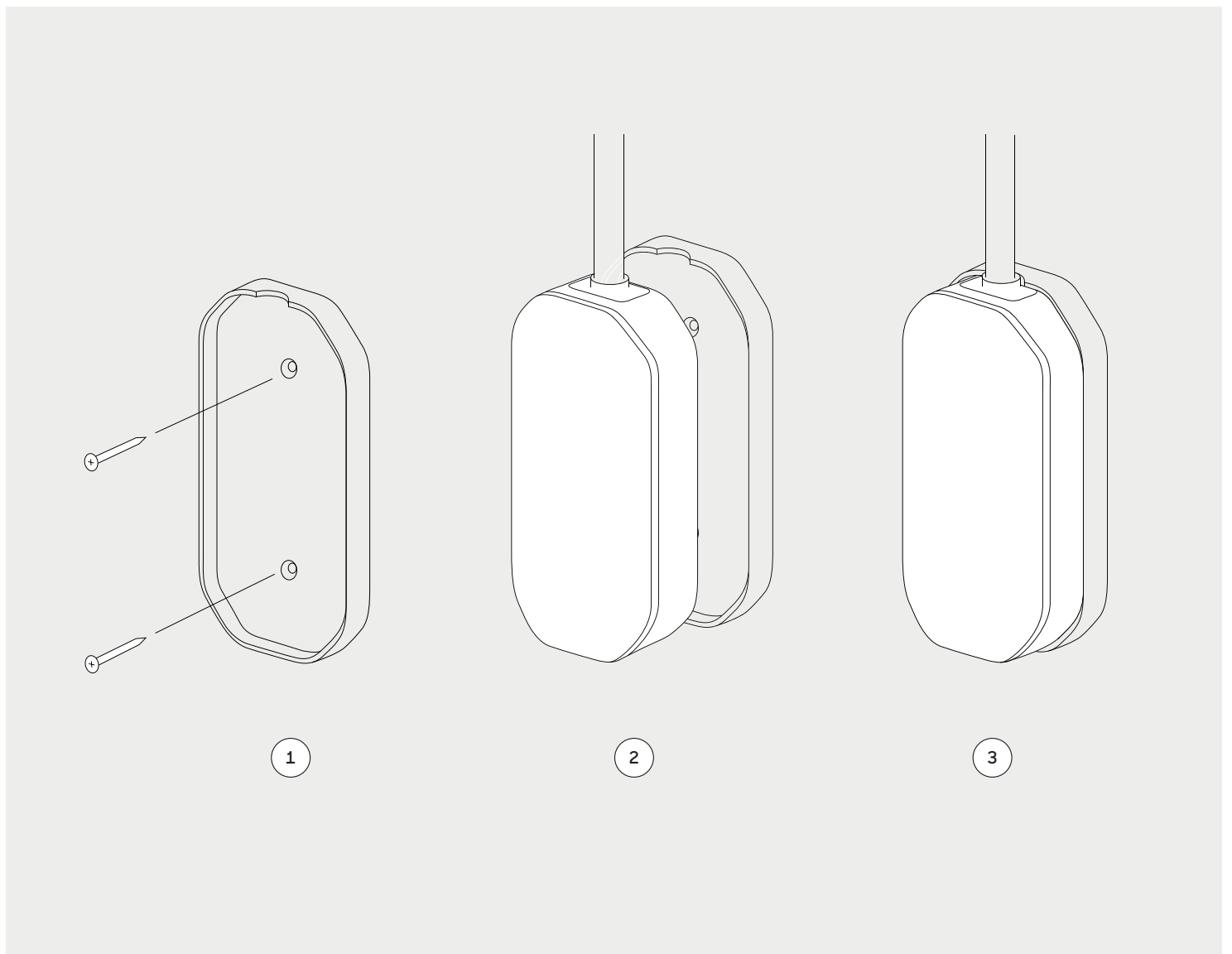
The Mobile Charging Cable Wall Mount is designed to hold the control box in place on the wall.

1. Select a location with an electrical socket in a covered area protected against direct sunlight and rain (e.g. in a garage). Place the Wall Mount at adaptor cable's length from the wall outlet. Measure using the included adaptors before marking pilot holes.

2. Drill the pilot holes. Ensure the pilot holes being drilled are clear of conduits or other electrical wiring within the selected wall.

3. Using two of the included drywall screws, fasten the bracket to the wall.

4. After plugging the adaptor head in, snap the control box into the bracket.

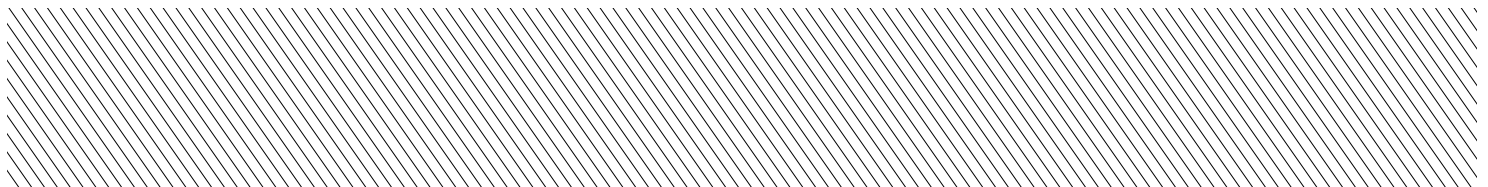
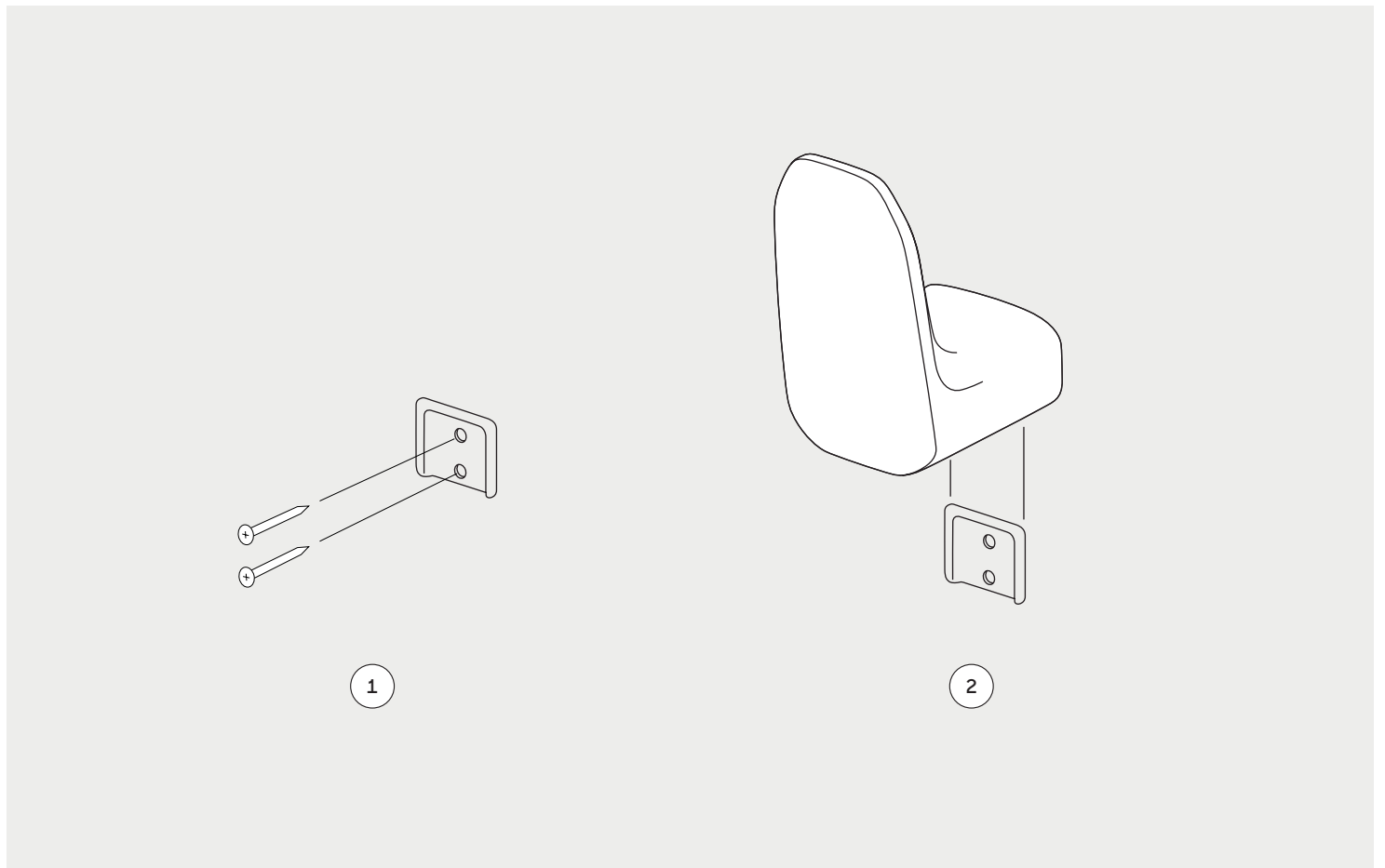


Cable Organizer Installation

Instructions

The Mobile Charging Cable Organizer is designed to organize the connector-side cable of the unit.

1. Take the metal hardware bracket and position it along a wall within proximity of the electrical socket and wall mount.
2. Mark the pilot holes on the wall.
3. Drill the mounting holes. Using 2 of the included drywall screws, fasten the bracket to the wall.
4. Position the Organizer directly above the bracket along the wall, and slide the Organizer downwards onto the bracket.



Warranty

Warranty Summary

Your Lucid Mobile Charging Cable includes a 2 year warranty unless covered by Lucid's New Vehicle warranty. For warranty questions please contact your Lucid representative

Lucid warrants the included hardware product and accessories against defects in material, workmanship and function for two years from the date of purchase unless covered by Lucid's New Vehicle warranty. Lucid does not warrant against normal wear and tear, nor damage caused by accident or abuse.

Technical Support

Contact

+1 (888) 995-8243
customer@lucidmotors.com
www.lucidmotors.com

